



PATHWAYS TO STEM (PATHS) PROGRAM



2024-25
IMPACT
REPORT

A MESSAGE FROM LEADERSHIP

The mission of the PATHS Program at UC San Diego is to foster excellence in science, technology, engineering and mathematics (STEM) through enhanced access and mentorship. Thanks to the generosity of donors like you, PATHS scholars are not only preparing for the future of STEM — they are shaping it right now.

Since 2017, PATHS has supported 144 undergraduates, with 52 alumni already pursuing graduate programs and meaningful STEM careers. Throughout their journey, our scholars engage in hands-on research and internships that equip them with the skills and training to thrive the field — across campus and beyond. Accomplishments such as publishing, delivering scientific talks, leading and mentoring demonstrate that our scholars are becoming today's leaders. In this report, you will read the stories of several PATHS scholars who are beginning to make an impact as they learn and flourish.

Your partnership makes this possible, as you help build a lasting legacy of innovation, discovery and impact. With partners like you by our side, we look forward to continuing this work together to ensure the future of STEM remains stronger than ever. Thank you for your commitment to strengthening access and support for developing STEM leaders.

With gratitude,



Becky R. Pettitt
*Vice Chancellor
Organizational
Transformation*



Gentry Patrick
*Founder, Faculty Director
of PATHS Scholars Program
Kavli and Dr. William
and Marisa Rastetter
Chancellor's Endowed Chair
in Neurobiology*



Guadalupe Fernandez
*Director
PATHS Scholars Program*



ALUMNI SCHOLAR PROFILE: LUIS VELEDIAZ '25

What have you been up to since graduation? Since graduating, I've returned to Tandem Diabetes Care as a full-time software engineer. I first interned there through a connection I made with PATHS, and it was a life-changing experience. Now, I work on tools that support people living with diabetes, including some of my own family members. It's meaningful to know that the work I do directly impacts people's lives, and I feel proud to contribute to projects that have both technical depth and real-world value.

How has your PATHS experience affected your life and your career trajectory?

PATHS changed everything for me. I came to UC San Diego doubting whether I belonged in college, but PATHS gave me the confidence, mentorship and community I needed to grow. The program connected me with opportunities like my internship at Tandem and organizations such as San Diego Squared and Society of Hispanic Professional Engineers. Even more importantly, it surrounded me with people who believed in me before I believed in myself. Because of PATHS, I didn't just earn a degree: I became the first in my family to graduate college, and I now carry forward a sense of purpose in my career.

What would you like to tell PATHS donors about the impact of their gifts? Thank you for changing lives. Your generosity creates more than scholarships — it creates confidence, community and opportunity. For me, PATHS meant finding mentors, building lifelong friendships and discovering that I could dream bigger than I ever thought possible. Because of your support, I didn't just graduate; I graduated with clarity, confidence and a mission to give back. Your investment doesn't only impact individual students like me, but also our families, communities and the future we are building.

Looking back to your first year at UC San Diego, what advice would you give to your

younger self, or to a student like you? I would tell my younger self that your background doesn't limit your future; it shapes it. The struggles and sacrifices of your family will become the foundation for your resilience and drive. There will be moments when you feel like you don't belong, but you do. Lean on the community around you, stay confident in your abilities and remember that you are capable of far more than you realize.



**Scholar statistics
for the 2024–25
academic year:**

93%

**Graduation
rate**

CONTINUING SCHOLAR PROFILE: NHI TRAN '27

What is your major, and why did you choose to attend UC San Diego?

My major is human biology, with a minor in health care — social issues. I chose UC San Diego because it perfectly met my personal and academic needs through PATHS, offering a diverse student community, support with rigorous academics, a close-knit student cohort and meaningful financial aid.

What are some of your career aspirations, and has PATHS impacted them in any way? I aspire to become a physician who addresses pressing health disparities and serves communities through research and health education. PATHS has been instrumental in my medical journey by connecting me with research opportunities, academic enrichment and mentorship that helped me build confidence in shaping my path towards medicine.

How have you grown as a scholar and as a person through your PATHS experience?

Coming into UC San Diego, I was extremely shy and unsure of my life path, but PATHS provided a space where I could grow, become more extroverted and explore different career paths. Over time, I've been inspired to use my voice to give back to my community and help provide a welcoming space for other students through becoming a cohort representative, initiating passion projects to help my community, and being a mentor for the next generation of students.



93%

Internship or research placement by their third year



100%

Retention in STEM majors

60%

First-generation college students



FIRST-YEAR SCHOLAR PROFILE: TANIA SOLORIO '29

Where are you from, and why did you choose UC San Diego? I'm from Los Angeles, but I spent most of my childhood living in México, which shaped a big part of who I am today. I chose to attend UC San Diego because of its strong engineering program, diverse community and opportunities for growth and exploration. I felt UC San Diego would be the right place to challenge myself academically while also connecting with people from different backgrounds.

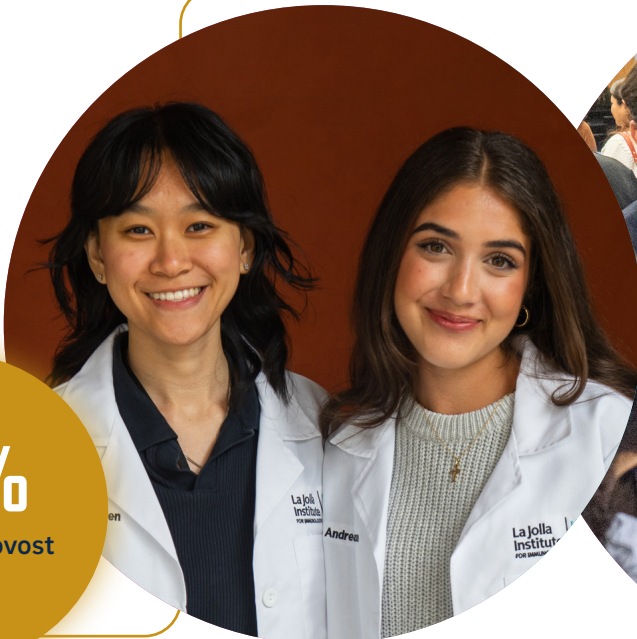
What are some of your career aspirations? I see myself as a future software engineer. I want to build things that matter, tools people can use — for purposes like making health care easier to reach. One day, I hope to take that vision further by starting my own company and creating innovative technology that has an impact on my community. Already, PATHS has reminded me that I don't have to figure it all out on my own. It's given me mentors to learn from, guidance when I've felt stuck and the confidence to know my perspective has a place in tech.

What would you like for PATHS donors to know about the impact of their gifts? Your generosity has changed the way I see myself and my future. Through PATHS, I've gained not only resources but also the confidence to belong in spaces I once doubted. For that I'm deeply grateful, because your support makes dreams like mine feel possible.



48%

Received provost
honors



THANK YOU FOR SUPPORTING PATHS

Your ongoing support provides the educational access that empowers PATHS scholars to achieve their dreams. With your contributions, we will continue preparing driven scholars as they pursue exciting opportunities in STEM fields — and expand the program for even greater impact.

Here are some specific areas where increased support will help us provide this life-changing, career-shaping opportunity to a greater number of students and strengthen the PATHS experience for all scholars:

- **Scholarships:** Help us reach our goal of admitting 50 scholars each year to ensure that STEM education is accessible to first-generation college students.
- **Stipends for summer research opportunities:** Provide scholars with opportunities to gain professional experience, grow their networks and enhance their career preparedness.
- **Funds for program building:** Enable us to increase hands-on training, cohort-building activities and our ability to support a growing number of scholars each year.
- **Endowed support:** Ensure the long-term sustainability of the PATHS Program, while also driving institutional transformation and bolstering support for scholars pursuing STEM degrees.



Scan the QR code to support PATHS scholarships or the PATHS program.

For more information about making a gift, please contact:

John Duca | 858-534-8305 | jduca@ucsd.edu

